



SEE WHAT YOU'VE BEEN MISSING

HIVIZ®

SHOOTING SYSTEMS



2019

PRODUCT CATALOG

8

HANDGUN
SIGHTS

24

SHOTGUN
SIGHTS

34

RIFLE
SIGHTS

38

TACTICAL
SIGHTS

39

ACCESSORIES

TABLE OF CONTENTS

LITEWAVE H3 TRITIUM/LITEPIPE 24 ILLUMINATION	4-5
MAGNI-OPTICS® CROSS-EYE DOMINANCE SIGHTS	6-7
HANDGUN SIGHTS	8-23
SHOTGUN SIGHTS - MAGNETIC/PLAIN BARREL	24-27
SHOTGUN SIGHTS - BEAD REPLACEMENTS	28-31
SHOTGUN SIGHTS - TURKEY/DEER SIGHT SETS	32-33
RIFLE SIGHTS	34-37
TACTICAL SIGHTS	38
ACCESSORIES - RECOIL PADS	39
SHOTGUN SIGHT SELECTION CHART	40-43

SEE WHAT YOU'VE BEEN MISSING



INNOVATION AND PERFORMANCE IS WHAT WE DO

HIVIZ® began in 1996 with a single product. Our goal was simple, to advance the art of shooting. For more than 20 years HIVIZ® has worked toward this goal by continuing to offer high quality and innovative products for shotguns, handguns and rifles. From our unique molded litepipes to our patented LiteWave H3 Tritium/Fiber optic sights HIVIZ® continues to be a leader in the shooting world. Our ultimate goal is to provide you, our valued and loyal customers with best sights available to increase your success and enjoyment of the shooting sports.

We are proud to be installed as original equipment on many major brands including Ruger®, Smith & Wesson®, Benelli®, Browning®, Henry® and Remington®.



LITEWAVE TECHNOLOGY



TRITIUM/LITEPIPE SIGHTS

NEW LITEWAVE H3 TRITIUM/LITEPIPE SIGHT 24 HOUR ILLUMINATION

The LiteWave H3 combines Tritium with the HIVIZ Litepipe technology for 24 illumination, true day and night performance. The all steel sight sets are rugged and dependable, designed for the roughest use, whether it is personal defense and protection, Law Enforcement or Military.

The new LiteWave H3 ensures fast sight acquisition and a bright sight picture day or night. The patented LiteWave H3 carries a 12 year tritium warranty for loss of illumination. Available for many popular handgun models the LiteWave H3 sights duplicate factory sight heights, this ensures LiteWave H3 sights will fit the same holsters and accessories as the factory sights.



LITEWAVE H3 FEATURES

- All steel construction
- Fiber optic color choice
- Brightest Tritium
- Bright white or orange front sight ring
- Fully encapsulated Tritium
- Chemical resistant
- Patented
- 12 Year warranty

SIGHT SET MSRP \$135.00
FRONT SIGHT MSRP \$55.00

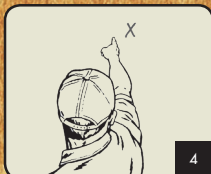
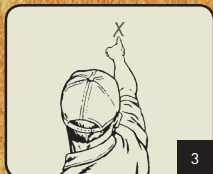


GLN321	Green litepipes w/white front ring	HIVIZ® LiteWave H3 sight combines Tritium with our LitePipe technology for day/night performance with 24 hour illumination. 12 year Tritium warranty. Fits Glock models 42 and 43
GLN421	Green/orange litepipes w/white front ring	
GLN521	Green litepipes w/ orange front ring	
GLN621	Green/orange litepipes w/orange front ring	
GLN325	Green litepipes w/white front ring	HIVIZ® LiteWave H3 sight combines Tritium with our LitePipe technology for day/night performance with 24 hour illumination. 12 year Tritium warranty. Fits all generation Glock models chambered in 9mm, 40 S&W and .357 Sig.; does not fit models 42 and 43.
GLN425	Green/orange litepipes w/white front ring	
GLN525	Green litepipes w/ orange front ring	
GLN625	Green/orange litepipes w/orange front ring	
GLN329	Green litepipes w/white front ring	HIVIZ® LiteWave H3 sight combines Tritium with our LitePipe technology for day/night performance with 24 hour illumination. 12 year Tritium warranty. Fits all generation Glock models chambered in 45 ACP, 10mm and 45 GAP.
GLN429	Green/orange litepipes w/white front ring	
GLN529	Green litepipes w/ orange front ring	
GLN629	Green/orange litepipes w/orange front ring	
MPSN321	Green litepipes w/white front ring	HIVIZ® LiteWave H3 sight combines Tritium with our LitePipe technology for day/night performance with 24 hour illumination. 12 year Tritium warranty. Fits Shield models in 9mm, 40 S&W, and .45 calibers.
MPSN421	Green/orange litepipes w/white front ring	
MPSN521	Green litepipes w/ orange front ring	
MPSN621	Green/orange litepipes w/orange front ring	
MPN321	Green litepipes w/white front ring	HIVIZ® LiteWave H3 sight combines Tritium with our LitePipe technology for day/night performance with 24 hour illumination. 12 year Tritium warranty. Fits M&P fullsize and compact in all calibers. Does not fit CORE, M&P 22 or M&P long slide models.
MPN421	Green/orange litepipes w/white front ring	
MPN521	Green litepipes w/ orange front ring	
MPN621	Green/orange litepipes w/orange front ring	
XDN321	Green litepipes w/white front ring	HIVIZ® LiteWave H3 sight combines Tritium with our LitePipe technology for day/night performance with 24 hour illumination. 12 year Tritium warranty. Fits the XD, XDS, XDE and XD-M models; does not fit the XD 5.25.
XDN421	Green/orange litepipes w/white front ring	
XDN521	Green litepipes w/ orange front ring	
XDN621	Green/orange litepipes w/orange front ring	
KBN321	Green litepipes w/white front ring	HIVIZ® LiteWave H3 sight combines Tritium with our LitePipe technology for day/night performance with 24 hour illumination. 12 year Tritium warranty. Fits Kimber 1911 models with fixed rear sight; does not fit Micro.
KBN421	Green/orange litepipes w/white front ring	
KBN521	Green litepipes w/ orange front ring	
KBN621	Green/orange litepipes w/orange front ring	
HKN321	Green litepipes w/white front ring	HIVIZ® LiteWave H3 sight combines Tritium with our LitePipe technology for day/night performance with 24 hour illumination. 12 year Tritium warranty. Fits HK VP9, VP9SK, VP40, HK45, HK45C, P30 AND P30L
HKN421	Green/orange litepipes w/white front ring	
HKN521	Green litepipes w/ orange front ring	
HKN621	Green/orange litepipes w/orange front ring	
SWN3001	Sight height 0.250	HIVIZ® LiteWave H3 sight combines Tritium with our LitePipe technology for day/night performance with 24 hour illumination. Green litepipe with white ring. 12 year Tritium warranty. Fits Smith and Wesson revolvers with the "DX" type interchangeable front sight.
SWN3002	Sight height 0.208	
SWN3003	Sight height 0.310	
GPN301	Green with white ring	HIVIZ® H3 sight combines Tritium with our LitePipe technology for day/night performance with 24 hour illumination. Green litepipe with white ring. 12 year Tritium warranty. Fits Ruger GP100 with spring plunger retained front sight.

magniOptics

IS CROSS-EYE DOMINANCE A PROBLEM FOR YOU? CHECK OUT MAGNI-OPTICS® TECHNOLOGY ONLY FROM HIVIZ® SHOOTING SYSTEMS.

Shooting Tip # 1: Cross Eye Dominance



Shooting Tip #1: Determine Eye Dominance
With both eyes open point your index finger at an object across the room. Now close your left eye. If you are still pointing at the object, as in #3, you are right eye dominant. If it appears you are pointing to the side of the object, as in #4, you are left eye dominant. There are varying degrees of eye dominance, but this is the most basic test. Previous solutions to cross-eye dominance ranged from switching shoulders to obscuring the vision of the offending eye. Magni-Optic technology solves it instantly.



If you are sighting with the proper eye, you'll see the fully lit sight.



If you are sighting with the wrong eye the sight won't appear lit.

Be the best shotgun shooter you can be with Magni-Optics Technology. No other shotgun sight on the market combines a LitePipe with a unique magnifying chamber and lens to correct cross-eye dominance issues. This proprietary design makes better shooters by encouraging both-eyes-open shooting.

The use of magnification ensures that the lighted sight picture is only visible if the shooter uses the correct sighting eye and the head is in the proper shooting position. Just as if you were looking through a rifle scope, only the shooting eye can see through the scope, only your shooting eye will see the LitePipe.

Cross-eye dominance is an issue that affects over 40% of shooters. Magni-Optics allows cross eye dominant shooters to shoot with both eyes open using their non-dominant eye.

Magni-Optics® technology is available in both magnetic and bead replacement models with interchangeable LitePipes.

MAGNI-HUNTER

Magni-Hunter harnesses the magnetic technology HIVIZ® is known for—powerful, rare earth magnets—that attach this cross-eye dominance solving sight easily yet firmly to the rib of nearly any shotgun. Featuring easily replaceable LitePipes in red and green, Magni-Hunter promises a quick-attach solution to any shooter battling cross eye dominance. ● ●

MGH2007-I Narrow Cross-Eye Dominant Correcting Sight
Fits ribs from .230" to .330"
(15/64" to 21/64") (5.8mm to 8.3mm)

MGH2007-II Wide Cross-eye Dominant Correcting Sight
Fits ribs from .355" to .440"
(23/64" to 7/16") (9mm to 11.1mm)

MSRP \$34.95



MGH2007-I



MGH2007-II

MAGNI-COMP

This screw-on bead sight offers instant success to cross-eye dominant shooters. Utilizing HIVIZ Magni-Optics Technology, Magni-Comp is an affordable sight solution that replaces standard beads on most shotguns offering struggling shooters immediate relief and better shooting. Comes with red and green interchangeable LitePipes. ● ●

MGC2006 MSRP \$41.95



Shooting Tip #8: *Pistol Grip*



The primary concern when shooting any handgun is to have a good firm grip with both hands. Grip the gun with the strong hand as high on the grip frame as you can. Your support hand should grasp your strong hand with the support hand index finger under the trigger guard at the second finger joint. Your trigger finger should touch the trigger no further than the first joint preferable on the pad. Avoid the "cup and saucer" grip which provides little or no benefit.

CZ

**CZ 75, 83, 85, 97, P-01**

- LiteWave® Front Sight
- Fits CZ 75, 83, 85, 97 & P-01 pistols; does not fit Kadet, Champion & IPSC models
- Interchangeable LitePipes: ● ● ●
- CZLW01 **MSRP \$41.95**

**CZ 75, 85, P-01**

- LiteWave® Rear Sight
- Fits CZ 75, 85 & P-01 pistols with fixed rear sights
- Interchangeable LitePipes: ● ● ●
- CZLW11 **MSRP \$55.95**

COLT

**COLT 1911**

- Fits most wide tenon 1911's
- Interchangeable LitePipes: ● ● ●
- CT2009 **MSRP \$39.20**

FNH

**FNS & FNX MODELS**

- Steel construction
- Does not fit FNP models
- Interchangeable LitePipes: ● ● ●

FX-9: Fits FNS-9 & FNX-9 with blade height .213"

FX-40: Fits FNS-40 & FNX-40 with blade height .198"

FX-45: Fits FNS-45 & FNX-45 with blade height .181"

MSRP \$39.20

CHECK US OUT ONLINE FOR
THE LATEST INFORMATION
ON NEW PRODUCTS,
GIVEAWAYS, VIDEOS AND
MORE!

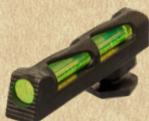




GLOCK

**GLOCK 9MM, 40 S&W, 357 SIG**

- Target Sight Set for 34/35
 - Front Sight Size: .215" Tall x .120" Wide
 - Rear Sight Size: .224" Tall; Notch is .140" Wide x .125" Deep
 - Front: Interchangeable LitePipes: ●●●
 - Rear: Interchangeable LitePipes: ●●●
- GLT178 **MSRP \$85.95**

**GLOCK - ALL MODELS**

- LiteWave® Front Sight
 - Fits All Glock pistols
 - Interchangeable LitePipes: ●●●
- GL2014 **MSRP \$34.95**

**GLOCK - ALL MODELS**

- Overmold Tactical Front Sight
 - Larger .120" diameter LitePipe and tough overmold design create the perfect CQB sight
 - Fits All Glock pistols
 - GL2009-G ●
 - GL2009-R ●
- MSRP \$45.40**

**GLOCK 9MM, 40 S&W, 357 SIG**

- LiteWave® Rear Sight
 - Fits Glock models chambered in 9mm, 40 S&W & 357 Sig; does not fit models 42 & 43
 - Interchangeable LitePipes: ●●●
- GLLW15 **MSRP \$55.95**

**GLOCK 45 & 10MM**

- LiteWave® Rear Sight
 - Fits models chambered in 45 ACP, 45 GAP & 10mm
 - Interchangeable LitePipes: ●●●
- GLLW19 **MSRP \$55.95**

**GLOCK 42, 43**

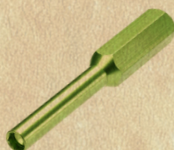
- LiteWave® Rear Sight
 - Fits Glock models 42 & 43
 - Interchangeable LitePipes: ●●●
- GLLW11 **MSRP \$55.95**

**GLOCK .315 FRONT SIGHT**

- 0.315 tall front sight designed to be matched with HIVIZ® adjustable Glock rear sight.
 - Fits all Glock models except 42 and 43
 - Interchangeable LitePipes: ●●●
- GLAD201 **MSRP \$41.95**

**GLOCK ADJUSTABLE REAR SIGHT**

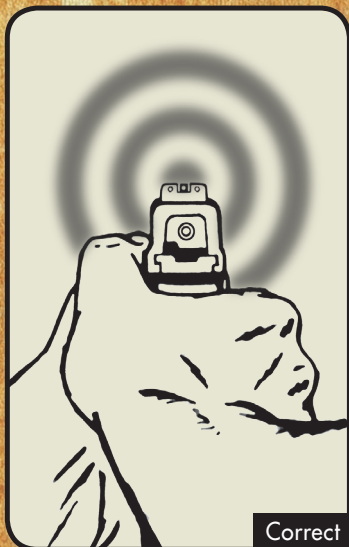
- Click adjustable windage and elevation
 - All steel competition grade
 - Fits all Glock models except 42 and 43
 - Interchangeable LitePipes: ●●●
- GLAD211 **MSRP \$85.00**

**HIVIZ SIGHT INSTALLATION TOOL**

- Sight Installation Tool for All Glock Front Sights

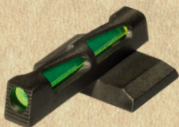
GLOCK-TL: **MSRP \$16.65**

Shooting Tip #15: Focus



Shotgunners focus on their target and are aware of their sights, but it's just the opposite for handgunners. Most combat and defensive handgun instructors preach "focus on your front sight and blur your target". Front sight acquisition and focus are tremendously aided by a bright, highly visible front sight. Practicing and using the hard focus on the front sight will allow one to shoot more quickly and more accurately. Try it the next time you go to the range to practice and compare your speed and accuracy to any other method.

H&K



HK45, P30, P2000, VP9, VP40

- LiteWave® Front Sight
- Fits HK45, HK45C, P30, P30L, P2000, P2000 SK, VP9 & VP40 pistols
- Interchangeable LitePipes: ● ● ●

HKLW01 **MSRP \$41.95**



HK45, P30, VP9, VP40

- LiteWave® Rear Sight
- Fits HK45, HK45C, P30, P30L, VP9 & VP40 pistols
- Interchangeable LitePipes: ● ● ●

HKLW11 **MSRP \$55.95**

KIMBER



KIMBER 1911

- LiteWave® Front Sight
- Fits 1911 models with .330" x .075" x 60° dovetail; does not fit Kimber .22 caliber conversion or Micro
- Interchangeable LitePipes: ● ● ●

KB2015 **MSRP \$41.95**

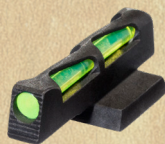


KIMBER 1911

- LiteWave® Rear Sight
- Fits 1911 models with fixed rear sight except Micro
- Interchangeable LitePipes: ● ● ●

KBLW11 **MSRP \$55.95**

NOVAK



NOVAK-STYLE SIGHTS

- LiteWave® Front Sight
- Fits Novak-style dovetail: .330" x .075" x 65°; blade height is .185"
- Interchangeable LitePipes: ● ● ●

NVLW01 **MSRP \$41.95**

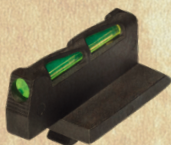
RUGER



LCR

- Overmold Front Sight
- Fits LCR and LCR-X chambered in .38 and .357
- LCR2010-G ●
- LCR2010-R ●

MSRP \$45.40



GP100

- LiteWave® Front Sight
- Fits All GP100 revolvers with adjustable rear sight and spring plunger retained front sight
- Interchangeable LitePipes: ● ● ●
- GPLW01 **MSRP \$34.95**



REDHAWK

- LiteWave® Front Sight
- Fits Redhawk and Super Redhawk revolvers with spring plunger retained front sight; also fits Super Blackhawk Hunter revolvers
- Interchangeable LitePipes: ● ● ●
- RHLW01 **MSRP \$41.95**



SUPER REDHAWK ALASKAN

- Overmold Front Sight
- Fits Super Redhawk Alaskan revolvers
- RA2011-G ●
- RA2011-R ●

MSRP \$45.40



SUPER BLACKHAWK

- LiteWave® Front Sight
- Fits stainless steel Super Blackhawk, Blackhawk & Bisley revolvers with pinned front sight; does not fit models chambered in .45 Colt
- Interchangeable LitePipes: ● ● ●
- RBLW01 **MSRP \$41.95**



"P" SERIES, SP101

- LiteWave® Front Sight
- Fits All "P" Series pistols; does not fit the P-345. Also fits the SP101, except in .327 Fed
- Interchangeable LitePipes: ● ● ●
- RGPLW01 **MSRP \$41.95**



RUGER



AMERICAN PISTOLS

- LiteWave® Front Sight
 - Fits Full Size & Compact American pistols
 - Interchangeable LitePipes: ● ● ●
- RGALW01 **MSRP \$41.95**



AMERICAN PISTOLS

- LiteWave® Rear Sight
 - Fits Full Size & Compact American pistols
 - Interchangeable LitePipes: ● ● ●
- RGALW11 **MSRP \$55.95**



SR22

- LiteWave® Front Sight
 - Fits SR22 pistols with adjustable rear sight
 - Interchangeable LitePipes: ● ● ●
- SR22 **MSRP \$41.95**



LC9, LC380

- LiteWave® Front Sight
 - Fits LC9 & LC380 pistols
 - Interchangeable LitePipes: ● ● ●
- LCLW01 **MSRP \$34.95**



LC9, LC380

- LiteWave® Rear Sight
 - Fits LC9 & LC380 pistols
 - Interchangeable LitePipes: ● ● ●
- LCLW11 **MSRP \$55.95**



SR9, SR40, SR45

- LiteWave® Front Sight
 - Fits SR9, SR9C, SR40, SR40C & SR45 pistols
 - Interchangeable LitePipes: ● ● ●
- SRLW01 **MSRP \$41.95**



MK II, III AND IV ADJUSTABLE REAR SIGHT

- All steel, click elevation and windage
 - Fits All MK II, III and IV models with adjustable rear sight, including 22/45 and 22/45 LITE
 - Interchangeable LitePipes: ● ● ●
- MKAD211 **MSRP \$85.00**



22/45 LITE

- LiteWave® Front Sight
 - Fits 22/45 LITE pistols with adjustable rear sight
 - Interchangeable LitePipes: ● ● ●
- RG2245LLW01 **MSRP \$34.95**



MK I, II, III, IV & BROWNING BUCK MARK

- LiteWave® Front Sight
 - Fits Ruger Mark I, II, III and IV steel bull barrel pistols; 22/45 with adjustable rear sight (does not fit 22/45 LITE); Single-Six revolvers with adjustable rear sight. Also fits Browning Buck Mark pistols (does not fit Challenge, 5.5 Target, and 5.5 Field)
 - Interchangeable LitePipes: ● ● ●
- HRBLW01 **MSRP \$34.95**

Shooting Tip #22: Tactical Sight Picture and Stance

by Mark Hotaling



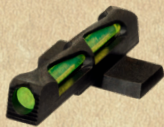
Hunting sight picture and stance:

While hunting birds or shooting clays, the shooter will have an off-set stance with his shooting side foot set back behind him. The sight picture should be two eyes open, focusing on the target with the sight in his peripheral vision.

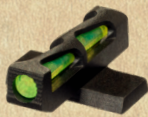
Tactical sight picture and stance:

Very different than a hunting stance, the tactical shot gunner should have both feet roughly shoulder width apart, toes pointed at the target. The shoulders are nearly squared up with the target and the shooting side foot is only a couple of inches back from the other. The sight picture should be that of shooting a rifle or pistol – front sight aligned with the rear sight and when the trigger is pressed, his eye is solely focused on the front sight. With the proper tactical sight alignment, sight picture and front sight focus, the tactical shotgun can certainly be employed in a surgical manner and the HiViz sight makes target acquisition much faster and more accurate.

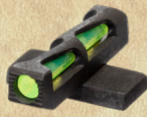
SIG SAUER

**P-SERIES**

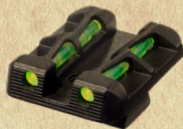
- LiteWave® Front Sight
 - Fits P-Series pistols with stamped steel slide; front sight height #6
 - Interchangeable LitePipes: ● ● ●
- SG2015 **MSRP \$41.95**

**P-SERIES**

- LiteWave® Front Sight
 - Fits P-Series pistols with machined slide; front sight height #6
 - Interchangeable LitePipes: ● ● ●
- SGLW06 **MSRP \$41.95**

**P-SERIES**

- LiteWave® Front Sight
 - Fits P-Series pistols with machined slide; front sight height #8
 - Interchangeable LitePipes: ● ● ●
- SGLW08 **MSRP \$41.95**

**P-SERIES**

- LiteWave® Rear Sight
 - Fits All P-Series pistols with fixed rear sight height #8; does not fit the P-320 & P-250
 - Interchangeable LitePipes: ● ● ●
- SGLW18 **MSRP \$55.95**



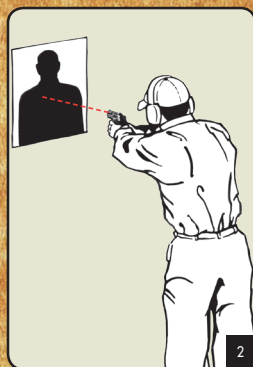
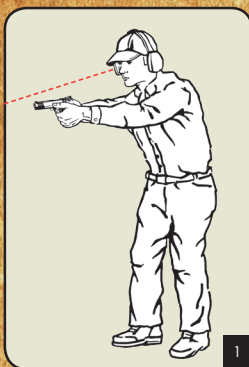
Lanny Barnes

HiViz ProStaff, 3-Time Olympic Biathlete

Professional 3-Gun competitor, she made the 3GN Pro Series and has won 4 major High Lady match titles. Lanny is also teaching courses to military, law enforcement and competitive shooters on how to shoot with an elevated heart rate and under stress.

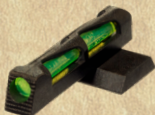
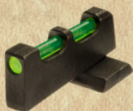


Shooting Tip #24: Close-Quarter Shooting by Mark Hotaling



In extreme close-quarter shooting, accuracy is imperative and speed is critical. When the target is less than 3 yards away, extend the pistol straight out with both eyes open, while looking over the sights press the trigger. The HIVIZ sight will greatly increase your speed and accuracy, and in this situation, instantly affirm your weapon is on target.

SMITH & WESSON



M&P ADJUSTABLE SIGHT SET

- Fits full size M&P and Pro pistols in 9mm, 40 S&W & 45 ACP; does not fit M&P CORE
 - Adjustable for elevation
 - Front: Interchangeable LitePipes: ● ● ●
 - Rear: Interchangeable LitePipes: ● ● ●
- SWMPE21 **MSRP \$95.95**

M&P, M&P SHIELD

- LiteWave® Front Sight
 - Fits M&P full size and compact models and M&P Shield; does not fit M&P 22
 - Interchangeable LitePipes: ● ● ●
- SW2014 **MSRP \$34.95**

M&P

- LiteWave® Rear Sight
 - Fits M&P full size and compact models; does not fit M&P 22
 - Interchangeable LitePipes: ● ● ●
- MPLW11 **MSRP \$55.95**



M&P SHIELD

- LiteWave® Rear Sight
 - Fits M&P Shield models chambered in 9mm, 40 S&W & 45 ACP
 - Interchangeable LitePipes: ● ● ●
- MPSLW11 **MSRP \$55.95**



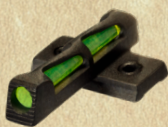
M&P PRO

- Interchangeable Front Sight
 - Fits M&P Pro with fixed sights; does not fit M&P CORE
 - Interchangeable LitePipes: ● ● ●
- SW2010 **MSRP \$39.20**



1911

- LiteWave® Front Sight
 - Fits all production model 1911's & 1911 E Series
 - Interchangeable LitePipes: ● ● ●
- SW11LW01 **MSRP \$41.95**



M&P 22

- LiteWave® Front Sight
 - Fits full size M&P 22 only; does not fit compact models
 - Interchangeable LitePipes: ● ● ●
- MP2012 **MSRP \$41.95**



PINNED SIGHT

- Overmold Front Sight
 - Fits 1.8" and 2.1" barrel revolvers with pinned front sight and fixed rear sight
- SW1001-G ●
SW1001-R ●
MSRP \$45.40

SMITH & WESSON CONTINUED ON NEXT PAGE



SMITH & WESSON



PINNED SIGHT

- Overmold Front Sight
- Fits 2.5" or longer barrel revolvers with pinned front sight and adjustable rear sight

SW1002-O ●

SW1002-G ●

SW1002-R ●

MSRP \$45.40



617, 647, 648

- Overmold Front Sight
- Fits All 617, 647 & 648 revolvers

SW617-G ●

SW617-R ●

MSRP \$45.40



SW3002



SW3001



PINNED SIGHT

- Interchangeable Sight
- Fits 2.5" or longer barrel revolvers with pinned front sight and adjustable rear sight, comes with red, green and white LitePipes

SWLW1002 ● ● ●

MSRP \$41.95



SW3003

"DX" REVOLVERS

- Overmold Front Sight
- Fits S&W revolvers with DX-style front sights

SW3002-G .208" Sight Height ●

SW3002-R .208" Sight Height ●

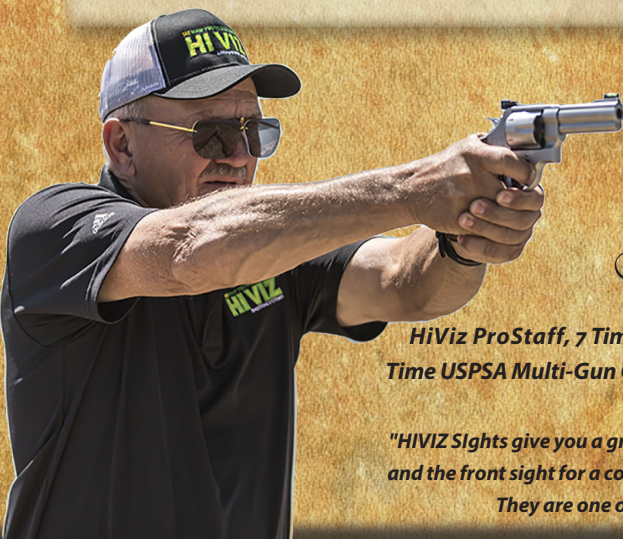
SW3001-G .250" Sight Height ●

SW3001-R .250" Sight Height ●

SW3003-G .310" Sight Height ●

SW3003-R .310" Sight Height ●

MSRP \$45.40



Jerry Miculek

HiViz ProStaff, 7 Time USPSA 3-Gun Champion, 4 Time USPSA Multi-Gun Champion, Multi-time ICORE Champion among others.

"HiViz Sights give you a great contrast between the target and the front sight for a consistent presentation of the gun.

They are one of my best kept shooting secrets"



SEE HOW IT'S ALL BEEN QUESTIONS

HIVIZ

SHOOTING SYSTEMS

SPRINGFIELD



1911

- LiteWave® Front Sight
- Fits 1911 Production Models, including Range Officer; does not fit GI & Mil Spec Models
- Interchangeable LitePipes: ● ● ●

SF2015 **MSRP \$41.95**



1911

- LiteWave® Rear Sight
- Fits 1911 Production Models; does not fit GI & Mil Spec Models
- Interchangeable LitePipes: ● ● ●

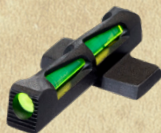
SF2109 **MSRP \$55.95**



XD

- LiteWave® Rear Sight
- Fits XD, XD-S, XD-M and XD-E pistols; does not fit the XD 5.25
- Interchangeable LitePipes: ● ● ●

XDLW11 **MSRP \$55.95**



XD

- LiteWave® Front Sight
- Fits XD, XD-S & XD-M and XD-E pistols; does not fit the XD 5.25
- Interchangeable LitePipes: ● ● ●

XD2014 **MSRP \$41.95**

STI



EDGE

- Interchangeable Front Sight
- Fits STI Edge and Edge variants
- Interchangeable LitePipes: ● ● ●

STI2008 **MSRP \$39.20**

TAURUS



PT 1911

- Interchangeable Front Sight
- Fits PT 1911 pistols
- Interchangeable LitePipes: ● ● ●

TR1911 **MSRP \$39.20**

WALTHER



P22

- Interchangeable Front Sight
- Fits P22 & PPQ 22; sight height .215" (same as Walther #3)
- Interchangeable LitePipes: ● ● ●

WAL2012 **MSRP \$39.20**



P99, SW99, PPQ

- Overmold Front Sight
- Fits CCP, PPQ M2, PPX, P99 and SW99
- SW3004-G ●
- SW3004-R ●

MSRP \$45.40



HIVIZ MAGNETIC SIGHTS, BRIGHT AND EASY TO INSTALL

WHEN YOU'RE LOOKING FOR THE BEST, TRUST THE ORIGINAL.

In 1996 HIVIZ® created the original magnetic shotgun sight and continues to be the industry leader in this category. HIVIZ magnetic shotgun sights use powerful, rare earth magnets to attach sights easily yet firmly to the rib of nearly any shotgun. Featuring easily replaceable LitePipes in multiple colors, HIVIZ has a magnetic shotgun sight that is perfect for you.

- Attaches directly behind factory bead
- Available in a variety of styles, colors and sight diameters for every shooter's preference

NOTE *Sight must fit your exact shotgun rib width for proper installation. Not compatible with carbon fiber or aluminum ribs.

M-SERIES MAGNETIC SIGHTS

When versatility is vital, the M-Series line of magnetic sights has you covered. The snap-on magnetic base is available in three different sizes to fit a wide variety of rib widths. All M-Series sights come with green, red, and the unique HIVIZ two-tone LitePipe. Pair your favorite shotgun with one of our favorite magnetic sights.

Interchangeable LitePipes: ● ● ●

M200 Ultra Narrow M-Series. Fits ribs from .171" to .265" (11/64" to 17/64") (4.2mm to 6.7mm)

M300 Narrow M-Series. Fits ribs from .218" to .328" (7/32" – 5/16") (5.5mm to 8.3mm)

M400 Wide M-Series. Fits ribs from .328" to .437" (21/64"–7/16") (8.3mm to 11.1mm)

MSRP \$23.10



TWO-IN-ONE

Check out the HIVIZ Two-In-One magnetic sight. We've cleverly combined our green and orange Litepipes into a single sight so you can change the color of your sight picture in seconds. All Two-In-One sights come with one orange/green round pipe sight and one orange/green triangular pipe sight. Change it fast with Two-In-One.

Interchangeable LitePipes: ● ● ● ●

TO200 Ultra Narrow Two-In-One. Fits ribs from .171" to .265" (11/64" to 17/64") (4.2mm to 6.7mm)

TO300 Narrow Two-In-One. Fits ribs from .218" to .328" (7/32" – 5/16") (5.5mm to 8.3mm)

TO350 Wide Two-In-One. Fits ribs from .330" to .355" (21/64" to 23/64") (8.4mm to 9mm)

TO400 Extra-Wide Two-In-One. Fits ribs from .360" to .440" (23/64" to 7/16") (9mm to 11.1mm)

MSRP \$25.50





BIRDBUSTER®

This "one-size fits all" magnetic sight fits multiple rib widths and offers triangular and round LitePipes in red and green. A popular choice for the hunter using a magnetic sight on a variety of shotguns, the Birdbuster is a HIVIZ® hunting favorite.

Interchangeable LitePipes: ●●●▲▲

BB2005 **MSRP \$24.05**



S-SERIES SNAP-ON MAGNETIC BASE

Our most economical magnetic sight, the S-Series offers the bare basics to a shooter who knows exactly what color sight they like. Available in three rib widths in two colors, this sight presents a bright affordable sight picture to any shotgun shooter.

Sight choices: ●●

S200-G Green Ultra Narrow S-Series. **S200-R** Red Ultra Narrow S-Series.

Fits ribs from .171" to .265" (11/64" to 17/64") (4.2mm to 6.7mm)

S300-G Green Narrow S-Series. **S300-R** Red Narrow S-Series.

Fits ribs from .218" to .328" (7/32" – 5/16") (5.5mm to 8.3mm)

S400-G Green Wide S-Series. **S400-R** Red Wide S-Series.

Fits ribs from .328" to .437" (21/64"–7/16") (8.3mm to 11.1mm)

MSRP \$17.85



REMINGTON® ETA



Developed specifically for the working-man's gun, the Remington ETA Sight (Easy Target Acquisition) is designed specifically to fit the Remington 870, 11-87, and 1100 models with 9/32" rib.

Interchangeable LitePipes: ●●●●●▲▲

- Two diameter sizes of round green LitePipes
- Two diameter sizes of round red LitePipes
- One green and one red triangular LitePipe

RM2006 **MSRP \$17.95**

MPB PLAIN BARREL SNAP-ON

Also available in a tactical model...check out page 38.

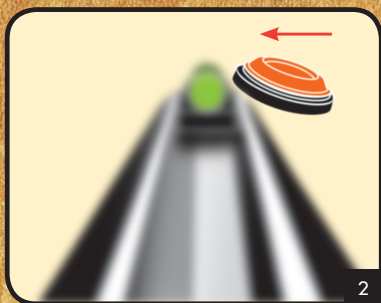


HIVIZ has something for every shotgun, including shotguns without ribs. This simple snap-on sight offers interchangeable LitePipes in an easy-to attach design for any plain-barrel shotgun. Offered with green and red LitePipes in .175 and .135 diameter. **MPB** Fits all 12, 16, and 20 gauge plain barrel shotguns without ventilated ribs. Interchangeable LitePipes: ●●

MPB MSRP \$23.10



Shooting Tip #25: Visual Focus



Competitors at the top of their game have learned the vital importance of hard focus on their target. The proper visual technique is to pick a specific target or bird and focus intently on it. If it's a game bird one's focus should be on its head (1). On clay targets one should focus on the leading edge (2). This intense focus should be maintained through the delivery of the shot including follow-through. For the hunter this means staying focused on one bird until you see it take the shot and then go after the second bird for a double. Likewise the target shooter should maintain focus on the first target until it starts to break apart or it is clear that it was missed. Using intense specific focus will result in far fewer misses.

WHY A BEAD REPLACEMENT?

BEAD SIGHT ADVANTAGES:

- A permanent bead that can't be lost or misplaced in transport or when hunting in thick brush or in blinds.
- Low profile similar to factory bead.
- Interchangeable LitePipes giving you a variety of colors for a variety of conditions.
- Some bead sights offer a variety of sight diameters and shapes.
- Comes with screws in five thread sizes to fit most shotguns.



LITEWAVE® COMPSIGHT®



The HIVIZ CompSight has become the standard for competitive shotgun shooters and is the choice of national and Olympic champions. Utilizing a low-profile steel base, LiteWave CompSight offers all the advantages of the light gathering technology of LiteWave combined with the unsurpassed durability that the "wave" exoskeleton provides. Includes multiple diameters of LitePipes in red, green, and white along with a LitePipe storage/changing key.

PMLW01 ● ● ● ● ● ● ● ●

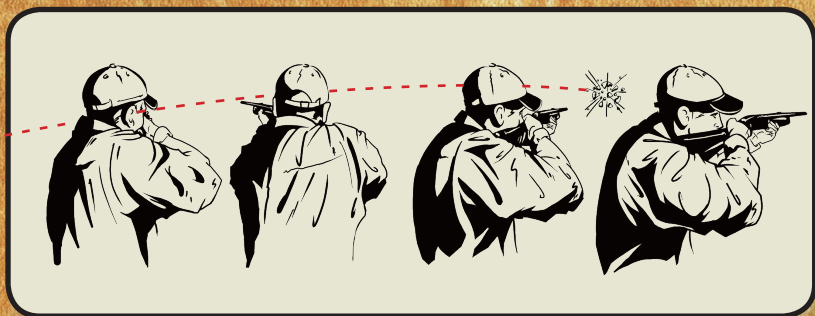
MSRP \$35.95

PM1002 Original Interchangeable
CompSight ● ● ● ● ● ● ● ●

MSRP \$39.95



Shooting Tip #5: *Follow Through*



There are three commonly accepted techniques for achieving forward allowance, or lead, on a moving target. They are sustained (maintained) lead, pull-away, and swing (pull) through. Which one you choose as your primary method is a matter of personal choice. However, in order to reach a higher level of ability it's a good idea to get comfortable with all three. Some target presentations may be more effectively shot with a different technique than your primary style. The springing teal is a good example. Depending on the other target in a pair you may have to attempt the teal rising, at its apex, or dropping. A large percentage of shooters will employ swing-through on the way up, sustained lead at the apex and pull-away for the dropping teal. During your practice sessions you should practice with the different techniques on problem presentations and see what works best for you. Regardless of the lead method you choose, follow-through is one of the most critical elements of a successful shot.

FLAME

The Flame sight packs HIVIZ® brightness into a low-profile, compact package. It's the perfect for the shotgun shooter who needs an ultra-rugged sight they can depend on. Its low-profile design offers durability, and is a great choice for the rigors of the outdoor hunting environment.

FL2005-G ●
FL2004-R ●
MSRP \$17.30



MINICOMP



If you're looking for a smaller, more affordable alternative to the CompSight, the HIVIZ MiniComp is a popular choice. Like all HIVIZ bead sights, MiniComp is bright and easy to install. It is the only HIVIZ bead sight offering an orange LitePipe in addition to the standard green and red. ● ● ●
PM2011 **MSRP \$20.30**

SPARK II

The Spark II is one of the first compact sights that HIVIZ developed and remains a top seller today. It's tiny but brilliant with an affordable price tag. Unlike the new Spark III, the LitePipes are not interchangeable, so pick the color that best suits your needs.

BD1007 ●
BD1008 ●
MSRP \$11.05



TRICOMP



TriComp brings pinpoint accuracy to target acquisition. This innovative interchangeable design is loaded with options, equipped with both triangular and round LitePipes in a variety of colors and sizes. Any hunter or shooter can create a sight picture that suits their specific needs. ● ● ● ● ● ● ● ●
PM2003 **MSRP \$39.95**

SPARK III

Spark III brings HIVIZ's ingenious interchangeability to one of the brightest, most economical sights on the market. This big, bright dot is .090" in diameter, and comes with red, green, and white LitePipes bringing affordable accuracy to any shotgun. ● ● ●
SK2011 **MSRP \$15.70**





SEE www.hiviz.com FOR MORE INFORMATION

HIVIZ
SHOOTING SYSTEMS



HENRY® RIFLE SETS

Dress up your favorite plinker or hunting rifle with the brightest sights on the market. Now available for Henry rifles, HIVIZ® offers four new tack-driving sets with its patented LiteWave® design front sight. These sights deliver an amazingly bright sight picture for quick and easy target acquisition to boost your shooting performance. All sights are fully adjustable for windage and elevation. Includes red, green, and white LitePipes for the front sight and one set of green LitePipes for the rear sight. ●●●

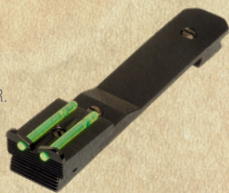
HHVS41 Fits: : H006, ES, ML, OA, R, S, SD, TT and WL.

HHVS450 Fits: H001T, TER, TPM, H003T, H004, AB, CM2, ES, FM, GE, MS2, S, SE, SE2, STS, TT and Y.

HHVS500 Fits: : H001TM, TMR, TMLP, TMRP, TV, H003TM, H0004M, MD3, SEM, SEV, SM, SV, V, VD3, H006M, MD3, MML, MR, MS, MSD, C, CBS, CD3, CML, CR, CS, CSD H009B, CC, BWL, H010B, CC, BWL, H012, MR41 and R.

HHVS570 Fits: H009CC, H010, AW, WL, H012CR, M and MR.

MSRP \$49.95



HENRY CLASSIC LEVER-ACTION RIMFIRE FRONT SIGHT

Like all HIVIZ sights, this sweet rimfire front sight brightens up your sight picture, improving accuracy and making these lever-action Henrys the most fun and precise rifles on the range. This sight comes with four interchangeable front LitePipes in green, red, white, and black. Combine it with our Universal Rear sight for an even better sight picture. ●●●●

HHVS001 Fits: H001, H001L, and H001Y models chambered in .22LR

HHVS001M Fits: H001M models chambered in .22 Mag

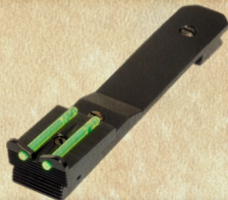
MSRP \$41.15



UNIVERSAL REAR RIFLE SIGHT

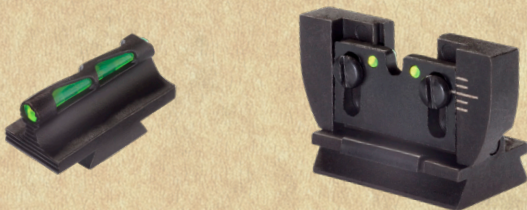
The HIVIZ Universal Rear Rifle Sight offers shooters the opportunity to brighten up the rear sight picture on a wide selection of rifles. Mounting in a standard 3/8" dovetail, this sight is easy to install, has full windage and elevation adjustments, and features HIVIZ green LitePipes. Make plinking more fun by adding the universal rear rifle sight to your favorite rifle. ●

UNI2006 MSRP \$30.10





RUGER® 10/22 SIGHT SET



Whether you shoot America's favorite rifle competitively, in the field or at the range, the HIVIZ® Ruger 10/22 sight set is something that no shooter should be without. The front sight features the latest LiteWave® technology for bright, reliable target acquisition. The rear sight has been carefully designed around the original Ruger design and is both foldable and adjustable for elevation. Both front and rear sight feature interchangeable LitePipes. Fits all Ruger 10/22 Standard rifles with 18.5" barrel, Carbine and Take-down models.

● ● ●
RG1022 **MSRP \$48.95**

FRONT DOVETAIL SIGHT

The Front Dovetail Sight series from HIVIZ are designed to replace front sights for all types of rimfire and centerfire rifles that have a 3/8" dovetail front sight. Comes with green and red interchangeable front LitePipes giving all shooters the right color for the right conditions—anytime, anywhere.

● ●

DOVM-260: 1/4" height

DOVM-315: 5/16" height

DOVM-380: 3/8" height

DOVM-420: 7/16" height

DOVM-500: 1/2" height

MSRP \$25.95



DOVM-260



DOVM-315



DOVM-380



DOVM-420



DOVM-500



Mark Cotaling

**HiViz ProStaff, Navy SEAL (former) and
President of Makhaira Group**

"When a critical incident occurs, you will always react in only one of two ways – either "naturally" or how you have repeatedly trained. Seek out and invest in only the best training so that under stress, your complete concentration is on the technical matter of placing shots properly."

MPB-TAC

The MPB-TAC is one of the most versatile tactical shotgun sights available today. The sight body is an overmolded steel spring that clamps down securely to most 12 gauge shotgun barrels. It is easily installed and easily removed with no tools required because the sight self-centers behind the front bead for perfect alignment. It can fit on shotgun models with extended magazines as unique cutouts ensure the sight does not interfere with the magazine clamp. The interchangeable LitePipe is enclosed by four small clamps that provide protection against breakage without obstructing the target.

● ●
MPB-TAC **MSRP \$25.30**



AR 2008

Your AR rifle is not complete without a HiViz AR sight. The nearly indestructible AR2008 comes with interchangeable LitePipes in both green and red for extra customization and features a detent plunger to tighten engagement and prevent any side-to-side movement of the sight. This easy-to-install sight replaces all types of AR 15 sights, both fixed and detachable, as well as M4 rifles with A-Frame or folding front sights. ● ●
AR2008 **MSRP \$33.05**



AK 2010, AK 47, 74, AKM

Featuring all the benefits of the popular HiViz AR sight but built for your AK. Robust and affordable, this sight offers interchangeable LitePipes in green and red. Includes a sight tool for easy installation and sight adjustment. ● ●
AK2010 **MSRP \$33.05**



Slip-On Pad
SP-M

SLIP-ON PAD

SP-S Slip-On Pad - small, 1" thick.

Fits stocks from 4.5"H x 1.375"W up to 4.6875"H x 1.5"W. See selection chart at right.

SP-M Slip-On Pad - medium, 1" thick.

Fits stocks from 4.6875"H x 1.625"W up to 4.875"H x 1.6875"W. See selection chart at right.

MSRP \$20.55

SLIP-ON PAD

SP-S (Small) 1" thick Slip-On Pad fits:
4 1/2" x 1 3/8" up to 4 11/16" x 1 1/2" stocks

BROWNING	A Bolt, A Bolt Medallion (most models) BLR model 81.
MOSSBERG	Most wood and synthetic stocks youth 500 models.
WINCHESTER	Most model 94 lever actions.
NEW ENGLAND FIREARMS	Partners and Handi-Rifles; most youth models.
MARLIN	Most Marlin lever action rifles.

SP-M (Medium) 1" thick Slip-On Pad fits:
4 11/16" x 1 5/8" up to 4 7/8" x 1 11/16" stocks

BAIKAL	Most models.
BENELLI	Nova, M-1 Field, Super Black Eagle 12 ga. (non-Camortech).
BERETTA	Models with 5 inch stocks.
BROWNING	Gold, Silver and Maxus Synthetic Stocks.
MOSSBERG	500, 835, 930 and 935; most wood and synthetic stocks except youth models.
STOEBER	Most 12 ga. models.
WINCHESTER	Most 1200, 1300 and 1400 models.
NEW ENGLAND FIREARMS	Most Partners and Handi-Rifles models.

Use this handy chart to help find the sight that fits your brand of shotgun. For models and brands not listed, please call for assistance selecting a sight.

BERETTA

MODEL	MAGNETIC SIGHTS	BEAD REPLACEMENT	REAR SIGHTS OR SIGHT SETS
686 687 models with narrow rib AL390 AL304 AL39 Field AL391 Urika Field A300 A400 Xplor Field SV10 Perennia	Birdbuster (BB2005) M-Series, Ultra Narrow Model (M200) Magni-Hunter (MGH2007-I) S-Series, Ultra Narrow Model (S200) Two-In-One, Ultra Narrow Model (TO200)	Flame (FL2005) Magni-Comp (MGC2006) CompSight (PM1002; PMLW01) TriComp (PM2003) MiniComp (PM2011) Spark III (SK2011) Spark II (BD1007)	C-Series, Ultra Narrow Model (C200-2) Four-In-One (F02008-I) TriViz (TT1001)
T & ST Rib Pintail Auto Silver Pigeon Skeet 682 Sporting & Gold Skeet	Birdbuster (BB2005) M-Series, Narrow Model (M300) Magni-Hunter (MGH2007-I) S-Series, Narrow Model (S300) Two-In-One, Narrow Model (TO300)	Flame (FL2005) Magni-Comp (MGC2006) CompSight (PM1002; PMLW01) TriComp (PM2003) MiniComp (PM2011) Spark III (SK2011) Spark II (BD1007)	
682 Trap Gold Trap Silver Pigeon Trap 687 Diamond Pigeon Trap	M-Series, Wide Model (M400) S-Series, Wide Model (S400) Two-In-One, Extra Wide Model (TO400)	Spark II (BD1007) Flame (FL2005) Magni-Comp (MGC2006) CompSight (PM1002; PMLW01) TriComp (PM2003) MiniComp (PM2011)	
Gold Onyx Sporting Models Diamond Pigeon Sporting Models		Flame (FL2005) Magni-Comp (MGC2006) CompSight (PM1002; PMLW01) TriComp (PM2003) MiniComp (PM2011) Spark III (SK2011)	

BENELLI

MODEL	MAGNETIC SIGHTS	BEAD REPLACEMENT	REAR SIGHTS OR SIGHT SETS
Super Black Eagle I, II, III M2 Field Nova Super Nova (All 12 Ga.) Models with Ventilated Rib	Birdbuster (BB2005) M-Series, Narrow Model (M300) Magni-Hunter (MGH2007-II) S-Series, Narrow Model (S300) Two-In-One, Narrow Model (TO300)	Flame (FL2005) Magni-Comp (MGC2006) CompSight (PM1002; PMLW01) TriComp (PM2003) MiniComp (PM2011) Spark III (SK2011) Spark II (BD1007)	C-Series, Narrow Model (C300-2) Four-In-One (F02008-II) TriViz (TT1001)
M2 Field Vinci Super Vinci All 20 Ga. Model with Ventilated Rib	Birdbuster (BB2005) M-Series, Ultra Narrow Model (M200) Magni-Hunter (MGH2007-I) S-Series, Ultra Narrow Model (S200) Two-In-One, Ultra Narrow Model (TO200)	Flame (FL2005) Magni-Comp (MGC2006) CompSight (PM1002; PMLW01) TriComp (PM2003) MiniComp (PM2011) Spark III (SK2011)	C-Series, Ultra Narrow Model (C200-2) Four-In-One (F02008-I) TriViz (TT1001)
Cordoba Super Sport Sport II Legacy 828U Ultralight (All Models in 12 Ga. & 20 Ga.)		Flame (FL2005) Magni-Comp (MGC2006) CompSight (PM1002; PMLW01) TriComp (PM2003) MiniComp (PM2011) Spark III (SK2011)	C-Series, Ultra Narrow Model (C200-2) Four-In-One (F02008-I) TriViz (TT1001)

BROWNING

MODEL	MAGNETIC SIGHTS	BEAD REPLACEMENT	REAR SIGHTS OR SIGHT SETS
Gold Field Models (28 & 410 Ga.) Silver Field Models Maxus Field Models Citori Citori Satin Hunter (20 Ga.) 625 Sporting (20, 28 & 410 Ga.) Cynergy (20, 28 & 410 Ga.) 725 Field New A5 Auto	Birdbuster (BB2005) M-Series, Ultra Narrow Model (M200) Magni-Hunter (MGH2007-I) S-Series, Ultra Narrow Model (S200) Two-In-One, Ultra Narrow Model (T0200)	Flame (FL2005) Magni-Comp (MGC2006) CompSight (PM1002; PMLW01) TriComp (PM2003) MiniComp (PM2011) Spark III (SK2011)	C-Series, Ultra Narrow Model (C200-2) Four-In-One (F02008-I) TriViz (TT1001)
BPS, All Models Gold (10 Ga.) Citori Satin Hunter (12 Ga.) 625 Sporting (12 Ga.) Cynergy (12 Ga.) Citori White Lightning Cynergy Field (12 Ga.)	Birdbuster (BB2005) M-Series, Narrow Model (M300) Magni-Hunter (MGH2007-I) S-Series, Narrow Model (S300) Two-In-One, Narrow Model (T0300)	Flame (FL2005) Magni-Comp (MGC2006) CompSight (PM1002; PMLW01) TriComp (PM2003) MiniComp (PM2011) Spark III (SK2011)	C-Series, Narrow Model (C300-2) Four-In-One (F02008-II) TriViz (TT1001)
Original A-5 Auto with ribbed barrel – <i>Due to the reciprocating barrel on the A-5 we recommend a screw-attach sight on all models.</i>		Flame (FL2005) Magni-Comp (MGC2006) CompSight (PM1002; PMLW01) TriComp (PM2003) MiniComp (PM2011) Spark III (SK2011)	Four-In-One (F02008-I) TriViz (TT1001)
BT99 Cynergy CX Citori Micro Citori Grade VII	M-Series, Wide Model (M400) S-Series, Wide Model (S400) Two-In-One, Wide Model (T0350)	Flame (FL2005) Magni-Comp (MGC2006) CompSight (PM1002; PMLW01) TriComp (PM2003) MiniComp (PM2011) Spark III (SK2011)	

CZ-USA

MODEL	MAGNETIC SIGHTS	BEAD REPLACEMENT	REAR SIGHTS OR SIGHT SETS
Redhead Over/Under, All Models Canvasback Over/Under, All Models Woodcock Over/Under, All Models Mallard Over/Under, All Models	Birdbuster (BB2005) M-Series, Narrow Model (M300) Magni-Hunter (MGH2007-I) S-Series, Narrow Model (S300) Two-In-One, Narrow Model (T0300)	Flame (FL2005) Magni-Comp (MGC2006) CompSight (PM1002; PMLW01) TriComp (PM2003) MiniComp (PM2011) Spark III (SK2011)	C-Series, Narrow Model (C300-2) Four-In-One (F02008-II) TriViz (TT1001)
Ringneck Side-by-Side, All Models Bobwhite Side-by-Side, All Models		Flame (FL2005) Magni-Comp (MGC2006) CompSight (PM1002; PMLW01) TriComp (PM2003) MiniComp (PM2011) Spark III (SK2011)	

MOSSBERG

MODEL	MAGNETIC SIGHTS	BEAD REPLACEMENT	REAR SIGHTS OR SIGHT SETS
500 535 835 935 930 505 Youth Models with ventilated rib	M-Series, Wide Model (M400) S-Series, Wide Model (S400) Two-In-One (T0350) <i>*Magnetic sights fit non-ported barrels only</i>	Flame (FL2005) Magni-Comp (MGC2006) CompSight (PM1002; PMLW01) TriComp (PM2003) MiniComp (PM2011) Spark III (SK2011) <i>*Screw-Attach sights fit ported or non-ported barrels</i>	C-Series, Wide Model (C400-1) Four-In-One (F02008-II) TriViz (TT1001)

PERAZZI

MODEL	MAGNETIC SIGHTS	BEAD REPLACEMENT	REAR SIGHTS OR SIGHT SETS
All Models		Flame (FL2005) Magni-Comp (MGC2006) CompSight (PM1002; PMLW01) TriComp (PM2003) MiniComp (PM2011) Spark III (SK2011)	

REMINGTON

MODEL	MAGNETIC SIGHTS	BEAD REPLACEMENT	REAR SIGHTS OR SIGHT SETS
870 Express 1187 Sportsmen with ventilated rib	Birdbuster (BB2005) M-Series, Narrow Model (M300) Magni-Hunter (MGH2007-I) Remington ETA (RM2006) S-Series, Narrow Model (S300) Two-In-One, Narrow Model (T0300)	<i>*Both of these models have a pressed-in bead. In order to use a screw-attach sight, the bead will have to be removed and the rib drilled and tapped.</i> Flame (FL2005) Magni-Comp (MGC2006) CompSight (PM1002; PMLW01) TriComp (PM2003) MiniComp (PM2011) Spark III (SK2011)	C-Series, Narrow Model (C300-2) Remington ETA (RM2013)
870 Wing Master 1100 Field with ventilated rib Versa Max	Birdbuster (BB2005) M-Series, Narrow Model (M300) Magni-Hunter (MGH2007-I) Remington ETA (RM2006) S-Series, Narrow Model (S300) Two-In-One, Narrow Model (T0300)	Flame (FL2005) Magni-Comp (MGC2006) CompSight (PM1002; PMLW01) TriComp (PM2003) MiniComp (PM2011) Spark III (SK2011)	C-Series, Narrow Model (C300-2) Remington ETA (RM2013) Four-In-One (F02008-II) TriViz (TT1001)

RUGER

MODEL	MAGNETIC SIGHTS	BEAD REPLACEMENT	REAR SIGHTS OR SIGHT SETS
Red Label, All Models	Birdbuster (BB2005) M-Series, Narrow Model (M300) Magni-Hunter (MGH2007-I) S-Series, Narrow Model (S300) Two-In-One, Narrow Model (T0300)	Flame (FL2005) Magni-Comp (MGC2006) CompSight (PM1002; PMLW01) TriComp (PM2003) MiniComp (PM2011) Spark III (SK2011)	C-Series, Narrow Model (C300-2) Four-In-One (F02008-II) TriViz (TT1001)

KRIEGHOFF

MODEL	MAGNETIC SIGHTS	BEAD REPLACEMENT	REAR SIGHTS OR SIGHT SETS
All Models <i>Note: Some Krieghoff un-singles and top singles with adjustable ribs may require a special nut to attach the sight. This nut is available upon request.</i>		Flame (FL2005) Magni-Comp (MGC2006) CompSight (PM1002; PMLW01) TriComp (PM2003) MiniComp (PM2011) Spark III (SK2011)	

SKB

MODEL	MAGNETIC SIGHTS	BEAD REPLACEMENT	REAR SIGHTS OR SIGHT SETS
All Models		Flame (FL2005) Magni-Comp (MGC2006) CompSight (PM1002; PMLW01) TriComp (PM2003) MiniComp (PM2011) Spark III (SK2011)	

STOEGER

MODEL	MAGNETIC SIGHTS	BEAD REPLACEMENT	REAR SIGHTS OR SIGHT SETS
M3500 M3000 M3020 P3000	M-Series, Ultra Narrow Model (M200) Magni-Hunter (MGH2007-I) S-Series, Ultra Narrow Model (S200) Two-In-One, Ultra Narrow Model (TO200)	Magni-Comp (MGC2006) CompSight (PM1002; PMLW01) TriComp (PM2003) MiniComp (PM2011) Spark III (SK2011)	Four-In-One (F02008-I) TriViz (TT1001)
P350	Birdbuster (BB2005) Birdbuster (BB2005) M-Series, Narrow Model (M300) Magni-Hunter (MGH2007-I) S-Series, Narrow Model (S300) Two-In-One, Narrow Model (TO300)	Flame (FL2005) Flame (FL2005) Magni-Comp (MGC2006) CompSight (PM1002; PMLW01) TriComp (PM2003) MiniComp (PM2011) Spark III (SK2011)	C-Series, Ultra Narrow Model (C200-2) C-Series, Narrow Model (C300-2) Four-In-One (F02008-II) TriViz (TT1001)

WINCHESTER

MODEL	MAGNETIC SIGHTS	BEAD REPLACEMENT	REAR SIGHTS OR SIGHT SETS
SX3, SX4, SXP Field	Birdbuster (BB2005) M-Series, Ultra Narrow Model (M200) Magni-Hunter (MGH2007-I) S-Series, Ultra Narrow Model (S200) Two-In-One, Ultra Narrow Model (TO200)	Flame (FL2005) Magni-Comp (MGC2006) CompSight (PM1002; PMLW01) TriComp (PM2003) MiniComp (PM2011) Spark III (SK2011)	C-Series, Ultra Narrow Model (C200-2) Four-In-One (F02008-I) TriViz (TT1001)
SX2 1200 1300 1400	M-Series, Wide Model (M400) S-Series, Wide Model (S400) Two-In-One, Wide Model (TO350)	Flame (FL2005) Magni-Comp (MGC2006) CompSight (PM1002; PMLW01) TriComp (PM2003) MiniComp (PM2011) Spark III (SK2011)	C-Series, Wide Model (C400-1) Four-In-One (F02008-II) TriViz (TT1001)



Allen Treadwell

**HiViz ProStaff, Bass Pro Hunting Team,
Professional Hunter. Host of Winchester
World of Whitetail**

HIVIZ® Shooting Systems has always had a vision to improve the sport of shooting. Our goals are simple: break more targets, harvest more game, punch more holes in the ten ring and have fun doing it.

Whether it's in the field, at the range, or for personal defense, HIVIZ® has a sight to offer for a broad selection of Shotguns, Handguns and rifles. Innovative, bright and durable you can depend on HIVIZ when it counts. Shoot better, shoot with confidence and shoot HIVIZ®.

HIVIZ, LiteWave, LiteWave H3, TriViz, XCoil, CompSight, Tombuster, Birdbuster, and Magni-Optics are registered trademarks

HIVIZ® Catalog © Copyright 2019
Printed in the U.S.A.

SEE WHAT YOU'VE BEEN MISSING

HIVIZ®

SHOOTING SYSTEMS

620 S. Adams Street | Laramie, WY 82070
Toll Free 800.589.4315 | Fax 970.416.1208

